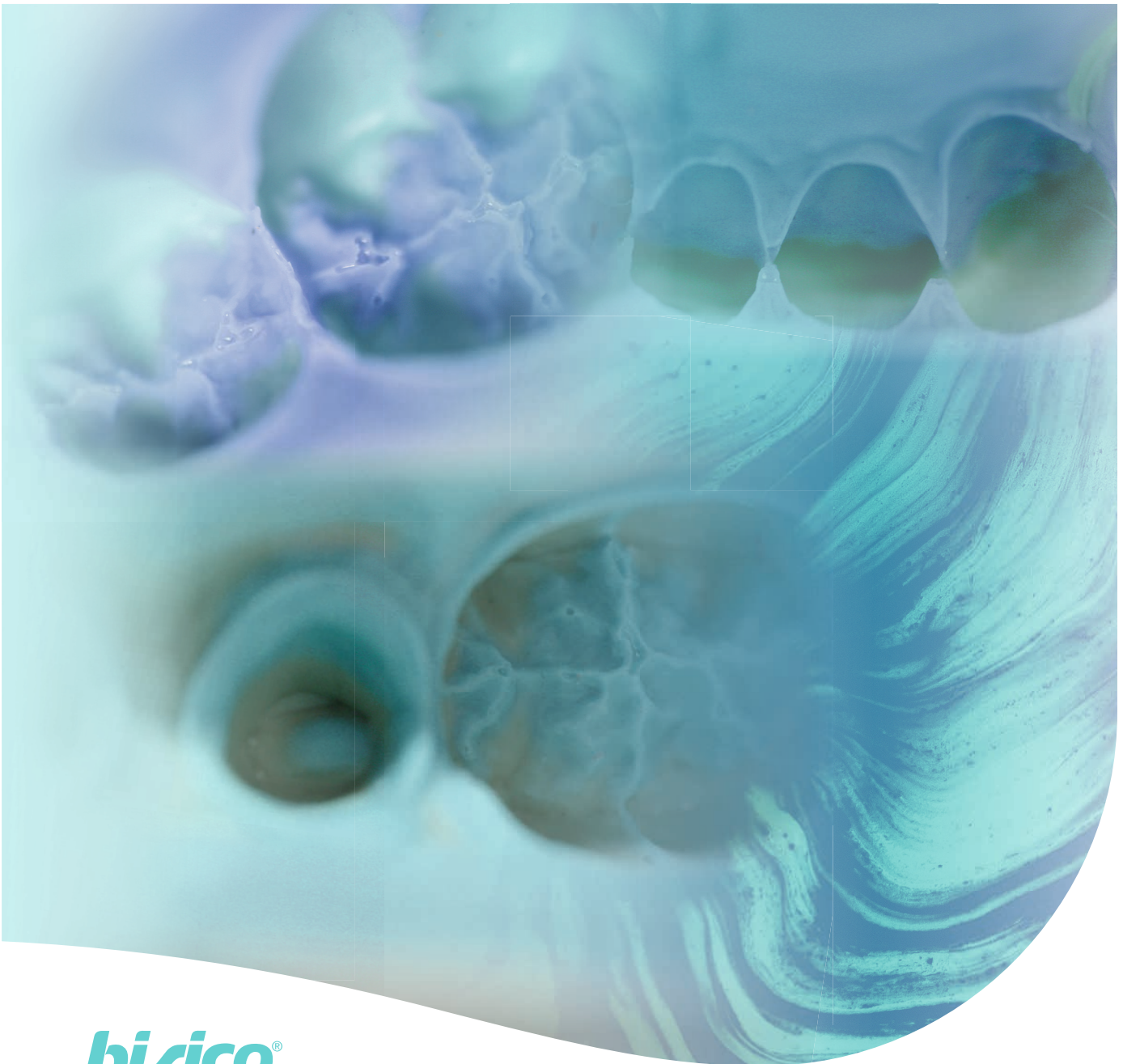


Your Method. Our Material.

Product catalogue

Bisico® Bielefelder Dentalsilicone GmbH & Co. KG



bisico®

History

Bisico, Bielefelder Dentalsilicone GmbH & Co. KG, is a family-run company which was founded in 1970 by the master dental technician Horst Ludwigs in Bielefeld. In 1999, the business was transferred to Maïke Wassmann, the founder's daughter.

From the initial product line based on a small range of condensation-curing silicones came a comprehensive range of high-quality consumables for the dentist and the dental laboratory. Bisico was one of the first companies to produce silicones for impressions. The product range today includes impression materials with a polyvinyl siloxane base, products for temporary restoration, high-quality materials for modern dental fillings, and modern bleaching materials. Since the company was already operating internationally at the very start, it developed into a global supplier. Satisfied dentists and dental technicians in more than 50 countries work with Bisico materials every day.



High quality standard

We are able to guarantee a consistently high standard of quality for our customers thanks to many years of close collaboration with our suppliers. In doing so, we place great value on „Made-in-Germany“ for all of our products. Adherence to this high standard is demonstrated by the compliance of our quality management system in accordance with DIN EN ISO13485:2021 as well as certification according EU-Medical-Device-Regulation (EU) 2017/745.



Reliable service

As a direct supplier, personal contact with our customers plays an important role. Our in-house service as well as our qualified sales representatives will be happy to advise you and are always available to discuss your issues and needs.

Our opening-hours:

Monday to Thursday: from 8 am to 5 pm German time

Friday: from 8 am to 3 pm German time

Impression Taking

■ Impression taking

- 5 How to use
- 7 Addition-curing tray materials
- 10 Addition-curing correction silicones
- 12 Accessories

■ Total prosthetics

- 16 Impression silicones
- 18 Ludwig technology
- 19 Accessories

■ Bite registration

- 21 Silicones
- 22 Accessories

■ Laboratory products

- 24 Silicone
- 24 Soft relining
- 25 Light-curing tray material
- 25 Gum mask
- 26 Duplicating silicone
- 26 Metal Primer

Restoration

■ Bondings & Etching gel

- 05 My Bond LC
- 06 E-Bond DC
- 06 Bond LC
- 07 Best Etch
- 07 Accessories

■ Composite

- 10 My Bio
- 11 My Bio flow-viscous
- 12 Nanofill unique
- 13 Nanofill unique flow
- 14 Nanofill n
- 15 Nanofill flow
- 16 Micro Esthetic
- 17 Micro Esthetic Gingiva
- 18 Bulk Fill
- 19 BisiCAL (Pulp capping)
- 21 Repo-Core DC (Core build-up)
- 22 Accessories

■ Cements

- 24 Cementime DC
- 24 Cem DC
- 25 E-Cem DC
- 26 Glass Cem
- 26 Glass Fill
- 26 Accessories

■ Temporary Materials

- 29 Provi Temp K
- 30 Provi Bond K
- 30 Temp S
- 31 Accessories

TABLE OF CONTENTS

Impression taking

A precise impression is the basis for
for any dental prosthesis.

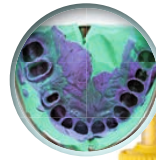
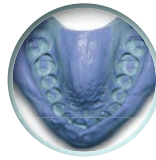


HOW TO USE

Bisico impression silicones are characterised by their superior quality and reliability. Within the Bisico product family you will find perfectly matched, innovative materials for all common impression techniques and indications. Thanks to decades of experience, our addition-curing silicones offer the highest precision and exceptional dimensional stability. Impressions remain stable even after several weeks, making them ideal for extended shipping times.

Another key advantage of Bisico silicones is their pronounced snap effect - they offer a long working time combined with a short setting time. This ensures stress-free application and optimal impression results. „Made in Germany“ stands for outstanding quality that is recognised and appreciated worldwide.

DOUBLE IMPRESSION TECHNOLOGY



S1 soft
kneadable / softputty

S1 suhy
kneadable / softputty

Compress putty
kneadable / softputty

Compress heavy
heavy-bodied / heavy

Precision
heavy-bodied / heavy



S2 suhy
medium-bodied / medium

S4 suhy
light-bodied / light



DOUBLE MIX TECHNOLOGY



MONOPHASE IMPRESSION

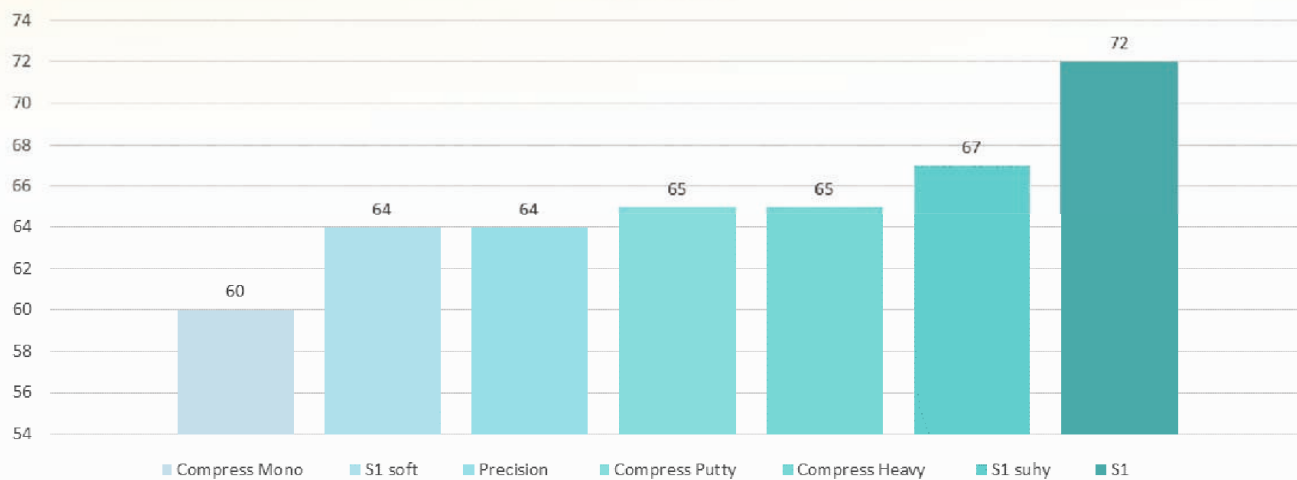


Compress mono
medium-bodied / medium



Precision
heavy-bodied / heavy

Shore Härte



ADDITION-CURING TRAY MATERIALS

S1

kneadable / putty



Kneadable preliminary impression material for use in the classic double impression technique.

Thanks to its firm mixing consistency, the material shows an especially high stability during the impression process. High elasticity and recovery on removal and contour accuracy during the model making process are ensured. Due to its final hardness of 72 shore A, Bisico® S1 is ideal for making preliminary impress according to the double impression technique.

- › **Recommended correction silicones:**
Bisico® S4 or Bisico® S4 suhy



TECHNICAL DATA

Consistency: kneadable/putty
Colour (A/B): white/ochre-yellow
Linear shrinkage: < 0,1%
Mixing time: 30 sec.
Working time (incl. mixing time): approx. 2:00 min.
Setting time in the mouth: < 3 Min.
Final hardness: approx. 72 shore A
Standard: ISO 4823, Type 0, very high consistency

PACKAGING

600 ml
(2 x 300 ml)
Art.-No.: 01120

S1 soft

kneadable / softputty



Kneadable silicone impression material for use in the double mix technique.

Bisico® S1 soft is characterised by an especially soft mixing consistency and a final hardness of 64 shore A. The impression is effected without using excessive compression pressure, it is of top quality and can be taken in ready-made or individual impression trays.

- › **Recommended correction silicones:**
Bisico® S4 suhy oder Bisico® S2 suhy



TECHNICAL DATA

Consistency: kneadable/soft putty
Colour (A/B): white/yellow
Linear shrinkage: < 0,1%
Mixing time: 30 sec.
Workingtime (incl. mixing time): approx. 2:00 min.
Setting time in the mouth: < 3 min.
Final hardness: approx. 64 shore A
Standard: ISO 4823, Type 0, very high consistency

PACKAGING

600 ml
(2 x 300 ml)
Art.-No.: 01060



S1 suhy



kneadable / putty

Bisico® S1 suhy is a kneadable, superhydrophilic silicone impression material specially developed to meet the requirements of the double mix and double impression technique. With its unique combination of smooth initial consistency and final hardness of 67 Shore A, S1 suhy offers universal applicability and exceptional results.

ADVANTAGES

✓ **Perfekte quality:**

The extremely strong hydrophilicity of the material ensures excellent wetting of all areas, even in difficult anatomical structures. This guarantees precise and detailed impressions.

✓ **Maximum efficiency thanks to the snap effect:**

- Long processing time enables stress-free work.
- Short curing time significantly reduces stress for the patient.

✓ **Outstanding material properties:**

- Excellent resilience after deformation, enabling precise reproduction even of details
- High dimensional stability

› **Recommended corrective silicones:** Bisico® S4 suhy or Bisico® S2 suhy

DELIVERY FORM

600 ml

(2 x 300 ml)

Art.No.: 01090

TECHNICAL DATA

Consistency: kneadable/
softputty

Colour (A/B): white/grey-green

Linear shrinkage: < 0,1%

Mixing time: 30 sec.

**Working time (incl. mixing
time):** approx. 2:00 min.

Setting time in the mouth:
< 3 Min.

Final hardness:

approx. 67 shore A

Standard: ISO 4823, Type O,
very high consistency

Precision

heavy-bodied / heavy



Bisico® Precision is a universally applicable, heavy-bodied impression material in a practical 75 ml cartridge, which impresses with its versatility and user-friendliness. With its special consistency and optimized final hardness, it is suitable for a wide range of impression techniques and indications without the need for a separate correction silicone.

Bisico® Precision offers ideal solutions for:

- Double mixing technique in the individual tray
- Telescopic and attachment work
- Implant impressions
- Basic corrective impression in full denture prosthetics
- Triple tray impressions for partial impressions

Thanks to the practical 75 ml cartridge and the option of dispensing the material with a dispenser, Bisico® Precision is also ideal for impression work outside the dental practice. The practical cartridge and the easy-to-use dispenser make transportation and application particularly practical and efficient.

› **Recommended corrective silicones:** Bisico® S2 suhy or Bisico® S4 suhy

TECHNICAL DATA

Consistency: heavy-bodied/
heavy

Color: orange

Linear shrinkage: < 0,1%

Mixing time: n.a.

**Working time (incl. mixing
time):** approx. 2:00 min.

Setting time in the mouth:
< 3 Min.

Final hardness: approx.

64 shore A

Standard: ISO 4823, Typ 1, high
consistency

DELIVERY FORM

4x 75 ml

(incl. 16 mixing-tips green)

Art.No.: 71370

3 x 50 ml

(incl. 9 mixing-tips green)

Art.No.: 71375



Compress putty

kneadable/putty



Bisico® Compress Putty is a unique, hydrophilic silicone impression material for use in standard 5:1 mixers. It is ideal for all common impression techniques and offers exceptional flexibility and precision.

ADVANTAGES

- ✓ **Unique consistency:**
Compress Putty can be kneaded or injected from the cartridge. After dispensing, the material can be manually molded in the impression tray if desired.
- ✓ **Maximum efficiency thanks to the snap effect:**
 - Long processing time enables stress-free work.
 - Short curing time significantly reduces stress for the patient.
- ✓ **Outstanding material properties:**
 - High dimensional stability and minimal shrinkage ensure precise results.
 - High elasticity
- ✓ **Bright color for improved control:**
The attractive bright colouring improves visual quality control and makes work easier.
- ✓ **Compatibility:**
BISICO® Compress putty can be used in combination with all light-bodied BISICO® correction silicones



DELIVERY FORM

380 ml
(incl. 10 dynamic mixing tips 5:1,
1 fixation ring)
Art.-No.: 05230

TECHNICAL DATA

Consistency: kneadable/putty
Colour: green
Linear shrinkage: < 0,1%
Mixing time: n.a.
Working time: 1:30 min.
Setting time in the mouth: < 3 min.
Final hardness: approx. 65 shore A
Standard: ISO 4823, Typ 0,
very high consistency

Compress heavy

heavy-bodied / heavy



Bisico® Compress Heavy is a highly viscous, hydrophilic silicone impression material for the double-mixing technique that has been specially developed for use in standard 5:1 mixing devices.

Thanks to its exceptional material properties, Compress Heavy offers a perfect combination of stability, precision and flexibility.

ADVANTAGES

- ✓ Highest dimensional stability
- ✓ Flexible in use, can be used for almost any impression technique
- ✓ Low stress on the patient due to short curing time
- ✓ Attractive, bright color setting to improve the visual quality control
- ✓ Can be used in combination with all Bisico correction silicones

TECHNISCHE DATEN

Consistency: heavy-bodied/heavy
Colour: yellow
Linear shrinkage: < 0,1%
Mixing time: n.a.
Working time: 2 min.
Setting time in the mouth: < 3 min.
Final hardness: approx. 65 shore A
Standard: ISO 4823, Typ 1, high consistency



DELIVERY FORM

380 ml
(incl. 10 dynamic mixing tips 5:1,
1 fixation ring)
Art.-No.: 05210

Compress mono

medium-bodied / medium



Bisico® Compress Mono is a hydrophilic silicone impression material that has been specially developed for use in standard 5:1 mixing units. As a true monophase material, it offers a wide range of applications and enables high-precision impressions without the use of a separate correction silicone.

With Bisico® Compress Mono, you can master demanding impressions, from:

- Telescopic and attachment work
- Complex implant impressions
- Standard impressions

The soft consistency of the material also allows easy transfer to separate application syringes for precise work on the preparations.

ADVANTAGES:

- ✓ **One material - no correction silicone required:** Perfect results in just one step, ideal for monophase impressions.
- ✓ **Hydrophilic properties:** Maximum wetting for detailed and precise results even in difficult areas.
- ✓ **Easy handling:** Optimized flow properties for even coverage and controlled application.
- ✓ **Versatile in use:** Flexible use for a wide range of indications without compromising precision.



DELIVERY FORM

380 ml

(incl. 10 dynamic mixing tips 5:1,
1 fixation ring)
Art.-No.: 05220

TECHNICAL DATA

Consistency:

medium-bodied/medium

Color: aubergine

Linear shrinkage: < 0,1%

Mixing time: n.a.

Working time: 2 min.

Setting time in the mouth: < 3 min.

Final hardness: approx. 60 shore A

Standard: ISO 4823, Typ 2,

medium consistency



DELIVERY FORM

380 ml

(incl. 10 dynamic mixing tips 5:1,
1 fixation ring)
Art.-No.: 05240

TECHNICAL DATA

Konsistenz: medium-bodied

Color: mint-green, mint taste

Linear shrinkage:

0,15% (24 h)

Mixing time: n.a.

Working time:

approx. 1:20 min.

Setting time in the mouth:

1:40 min.

Final hardness: approx. 45

shore A

Standard: ISO 4823, Typ 1,

medium consistency

Algi-Press

medium-bodied / medium



The innovative alginate substitute with the quality of an A-silicone

Bisico® Algi-Press combines the outstanding properties of modern A-silicones with the proven advantages of classic alginates. The result is a versatile, medium-flow impression material that offers maximum precision, easy handling and comfort for the patient.

Bisico® Algi-Press is versatile and ideal for:

- Anatomical impressions
- Oposing jaw impressions
- Production of temporary restorations
- Production of splints
- Orthodontic applications

ADVANTAGES:

- ✓ **High detail sharpness and good elastic recovery:**
Precise reproduction for accurate results.
- ✓ **Low shrinkage (0.15%):**
High dimensional stability, even during extended storage of the impression.
- ✓ **Patient-friendly:**
Short intraoral setting time, pleasant spearmint taste, and easy impression removal ensure maximum patient comfort.
- ✓ **Efficient handling:**
Homogeneous, automatic, fast, and dust-free mixing.

ADDITION-CURING CORRECTION MATERIALS

S4 suhy

low consistency/light



Bisico® S4 suhy is an addition-curing, superhydrophilic, fine-flowing corrective impression material that has been specially developed for all impression techniques. Its outstanding flow and impression properties guarantee precise results, even in demanding clinical situations.

ADVANTAGES:

✓ Optimal Flowability:

The material flows precisely into all critical areas, preventing air entrapment and capturing even the finest details with high accuracy.

✓ Superhydrophilic Formula:

In the moist dental environment, S4 suhy exhibits exceptional affinity for wetted surfaces such as mucosa and teeth, as residual

fluids are effectively displaced by compression pressure.

✓ Thixotropic Consistency:

The special material property prevents unintended flow of the applied material, even in hard-to-reach areas.

✓ Reliable Precision:

Perfect adaptation to complex anatomical structures ensures an exact reproduction of the preparation.



DELIVERY FORM

3 x 50 ml
(incl. 18 mixing tips yellow, 10 IOT yellow)

Art.-No.: 71430

6 x 50 ml
(incl. 30 mixing tips yellow)

Art.-No.: 71440

10 x 50 ml
(incl. 50 mixing tips yellow)

Art.-No.: 71445

TECHNICAL DATA

Consistency: low consistency/light

Color: violett

Linear shrinkage: < 0,1%

Mixing time: n.a.

Working time: 2 min.

Setting time in the mouth: < 3 min.

Final hardness: approx. 50 shore A

Standard: ISO 4823, Typ 3, low

consistency



S2 suhy

medium consistency/medium



Bisico® S2 suhy is an addition-curing, superhydrophilic correction impression material with medium flowability, specifically developed to meet the demands of modern dentistry. Its outstanding material properties make it the ideal choice for the double-mix technique.

ADVANTAGED:

✓ Superhydrophilic Formula:

Excellent surface wetting for precise detail reproduction, even in moist oral environments.

✓ Thixotropic Consistency:

Optimal stability prevents unwanted dripping and ensures reliable handling, even in challenging positions.

✓ Perfect Flow Properties:

The material adapts to complex anatomical structures, ensuring highly accurate impressions.

Working time: Tubes: 1:30 min. / Cartridges: 2 min.

Setting time in the mouth: < 3 min.

Final hardness: approx.. 55 shore A

Standard: ISO 4823, Typ 2, medium consistency

TECHNICAL DATA

Consistency: medium consistency/medium

Color: red

Linear shrinkage: < 0,1%

Mixing time: Tubes: 30 Sec. / Cartridges :n.a.

DELIVERY FORM

Tubes 2 x 100g

Art.-No.: 01160

Cartridges 3 x 50 ml

(incl. 18 mixing tips yellow, 10 IOT yellow), Art.-No.: 71730

Cartridges 6 x 50 ml

(incl. 30 mixing tips yellow), Art.-No.: 71210

ACCESSORIES



Dispenser 50

For use with all 50 ml cartridges (mixing ratio 1:1).

Art.-No.: 01910



Dispenser 75

For use with 75 ml maxi-cartridges, but also suitable for 50 ml cartridges.

Art.-No.: 01920



Sympress I

Automatic dispense and mix device for 5:1 cartridges (compress).

Art.-No.: 20150

The new generation of mixing tips

The mixing tips for the cartridges are colour-coded. The colour of the cartridge cap corresponds to the colour of the recommended mixing tip.

The new mixing tips are significantly improved by a more compact design.

- ✓ Optimized, more homogeneous mixing results
- ✓ Higher application reliability
- ✓ Significantly reduced waste
- ✓ 100% compatibility with the existing cartridge system
- ✓ Seal of innovative quality



DELIVERY FORM

Mixing tips yellow, 50 pieces

Art.-No.: 01950

Mixing tips yellow, 100 pieces

Art.-No.: 01955

Mixing tips pink, 50 pieces

Art.-No.: 01970

Mixing tips pink, 100 pieces

Art.-No.: 01975

Mixing tips green, 50 pieces

Art.-No.: 01980

Mixing tips dynamic 5:1, 50 pieces

Art.-No.: 01780



SUITABLE FOR:

S4 suhy
S2 suhy

Precision

S4

5:1 Cartridges



Intra-Oral-Tips

The Intra-Oral-Tips are attached to the mixing tips to enable intra-oral application of the correction material directly from the cartridge. The curved shape allows inaccessible areas to be reached easily. The tips of the IOT are conically shaped. The end of the tip can be cut to enlarge the opening, thus reducing the required injection pressure substantially.

DELIVERY FORM

IOT yellow, 100 pieces
Art.-No.: 01965



Plicafol

Adaptable special space holding foil which facilitates impression-taking due to its quick and easy handling. The time-consuming job of cutting out the impression is eliminated.

The Plicafol is pre-cut in the form of a dental arch and, with the help of scissors the final shape can be achieved easily. During the preliminary impression process using a stable impression material, e.g. Bisico® S1 suhy, the Plicafol adapts to the contours of the teeth. After completion of the preliminary impression, the Plicafol is removed, leaving an exactly defined free space for the correction material.

DELIVERY FORM

100 pieces
Art.-No.: 03910

Adhesiv

Bisico Adhesive is a high-quality universal adhesive for silicone-based dental impression materials. It enables reliable adhesion between impression materials and impression trays and prevents the impression materials from detaching during removal from the oral cavity.

DELIVERY FORM

10 g Adhesiv, 10 Disposable brushes
Bonding agent for impression trays
Art.-No.: 08210
Bag of disposable brushes, 25 pieces
Art.-No.: 01808



Complete dentures prosthetics

Perfect border moulding and precise functional impressions
- for optimal positioning.



For decades Bisico® has worked intensively on complete denture issues and has developed a number of addition-curing silicones specifically adapted to the requirements of complete dentures. Our range of products allows the impression-taking of edentulous jaws by the usual procedures. Apart from the shaping of functional edges with Bisico® Function, we attach special importance to the base correction impression-taking.

Both Bisico® Mandisil und Bisico® S4 are available in tubes and can be mixed in any ratio to create intermediate consistencies, depending on the condition of the jaw. As these silicones do not have any thixotropic properties, a „floating“ correction impression of edentulous jaws which is free of pressure points can be fabricated.

In addition, we are able to provide you with our „Ludwigs-Technique“ a method for preparation of total prosthesis, comprising all steps, from the first impression to insertion of the denture. Special emphasis of the „Ludwigs-Technique“ is on the preliminary functional impression which forms the basis for the smooth functioning of a complete denture. With the „Ludwigs-Technique“, the results from each step are systematically integrated into the next step.

IMPRESSION SILICONES

Function



kneadable / putty

Bisico® Function is an addition-curing special silicone material specifically developed for functional border molding in complete dentures and distal-extension partial dentures. With Bisico Function, functional borders are designed with maximum precision and contour accuracy of the peripheral seal.

ADVANTAGED

- Kneadable consistency:**
Easy and precise manual shaping for an exact functional border design.
- Efficient Application:**
The material is evenly applied to the tray border using the included syringe and then manually adjusted—ideal for maximum control.
- Highest Contour Accuracy:**
Ensures precise reproduction of the peripheral seal and optimal results in functional border molding.
- Flexible Working Time:**
A setting time of 3:30 minutes in the mouth allows for all necessary functional movements to be performed without time pressure.



TECHNICAL DATA

Consistency: kneadable/putty
Color (A/B): white/olive-green
Linear shrinkage: < 0,1%
Mixing time: 30 sec.
Working time (incl. mixing time):
 2:30 min.
Setting time in the mouth:
 approx. 3:30 min.
Final hardness: approx. 60 shore A
Standard: ISO 4823, Typ 0, very high consistency

DELIVERY FORM

2 x 150 g tins
 (incl. 1 application syringe,
 10 g Adhesiv)
 Art.-No.: 01350

Picture: Mirafzal Mirolimov



Mandisil

medium-bodied / medium

Bisico® Mandisil is an addition-curing, medium-flow special silicone specifically developed for base correction impressions in complete dentures. Mandisil is free of thixotropy and has been specifically adapted to the specific compression conditions of free-end and full dentures.

ADVANTAGES

✓ **Optimized Flow Properties:**

Perfectly adapted to the specific requirements of distal-extension and complete dentures, especially in the lower jaw.

✓ **Custom Adaptation for Upper Jaw Impressions:**

For the larger base area of the upper jaw, Bisico® Mandisil can be ideally combined with Bisico® S4 to achieve optimal results.

✓ **Medium-Flow Consistency:**

Provides precise reproduction of mucosal conditions, ensuring maximum retention and accuracy of fit.



TECHNICAL DATA

Consistency: medium consistency / medium

Color (A/B): white/blue-green

Linear shrinkage: < 0,1%

Mixing time: 30 sec.

Working time (incl. mixing time): 2 min.

Setting time in the mouth: approx. 3 min.

Final hardness: approx. 48 shore A

Standard: ISO 4823, Typ 2, medium consistency

DELIVERY FORM

2x100 g tubes

Art-No.: 01220

50 ml cartridge

(incl. 6 mixing tips pink)

Art.-No.: 01604



S4

low consistency / light

Bisico® S4 is an addition-curing, fine-flowing corrective impression material that is characterized by its exceptional properties. Free of thixotropy, it enables precise and detailed impressions in specific clinical applications.

ADVANTAGED

✓ **Free from thixotropy:**

The material remains evenly flowing and adapts perfectly to the anatomical features of the upper jaw.

✓ **Versatile in use:**

- Pressure Spot Control Impression: Enables precise identification and impression of pressure spots.
- Base Correction Impression: Particularly suitable for the upper jaw in complete dentures.

✓ **Can be combined with Bisico® Mandisil:**

Depending on the jaw conditions, a mixture of Bisico® S4 and Mandisil can achieve optimum results in the basic corrective impression.

DELIVERY FORM

2 x 100 g tubes

Art.-No.: 01260

3 x 50 ml cartridges

(incl. 18 mixing tips pink, 10 IOT white)

Art.-No.: 71700

TECHNICAL DATA

Consistency: low consistency/ light

Color (A/B): white/blue

Linear shrinkage: < 0,1%

Mixing time: 30 sec.

Working time (incl. mixing time): 2:30 min.

Setting time in the mouth: < 3 min.

Final hardness: approx. 50 shore A

Standard: ISO 4823, Typ 3, low consistency



DELIVERY FORM

600 ml
(2 x 300 ml)
Art.-No.: 01310

TECHNICAL DATA

Consistency:
kneadable/super-softputty
Color (A/B): white/green
Linear shrinkage: < 0,1%
Mixing time: 30 sek.
Working time (incl. mixing time): 2:30 min.
Setting time in the mouth:
approx. 3:30 min.
Final hardness:
approx. 48 shore A
Standard: ISO 4823, Typ 0, very high consistency

Perfect

kneadable / super-softputty



Bisico® Perfect is a kneadable, ultra-soft impression material based on addition-curing silicone, specifically developed for impression-taking of sensitive and soft mucosal areas. Its outstanding material properties enable highly detailed and gentle impressions, even for challenging indications.

ADVANTAGES

- ✓ **Ultra-Soft Consistency:**
Perfect for precise impressions of soft mucosal areas, such as vestibular impressions in complete dentures.
- ✓ **Optimal Detail Reproduction**
Ensures an exact representation of anatomical structures, including accurate lip support.
- ✓ **Functional Border Molding**
Functional Border Molding: Supports precise shaping of the functional border in complete dentures.
- ✓ **Tray Material in the Dual-Mix Technique:** Ideal for use in custom trays.
- ✓ **Excellent Handling:**
The kneadable consistency allows for easy, precise, and controlled application.

ACCESSORIES



Application syringe for Bisico® Function

DELIVERY FORM

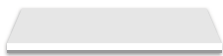
10 ml
Art.-No.: 23110



Adhesiv

DELIVERY FORM

10 g, incl. 25 disposable brushes
Art.-No.: 08210



Mixing block, white

DELIVERY FORM

20 Leaf
Art.-No.: 21150



Ludwigs technology rail

to stabilize the preprint

DELIVERY FORM

5 piece
Art.-No.: 08310

Much more than just prosthetics. THE “LUDWIGS-TECHNIQUE”

The lower jaw denture represents one of the most important problems in dentistry. In particular, the alveolar process of the lower jaw is very often subject to accelerated atrophy, which can already be observed when the partially edentulous lower jaw is treated by inserting partial free-end dentures. Therefore, it is necessary, especially for the lower jaw, to provide the saddles of partial dentures with a maximum support surface; this means that also in the case of partial dentures the denture saddles have to be shaped in a functional way. The „Ludwigs-Technique“ shows that the correct functioning of a complete denture primarily depends on the quality of the impression, especially of the preliminary impression, which is used for fabricating the functional tray. The ready-made trays generally used are not adequate for fabricating a correct preliminary impression, since in most cases the unavoidable over-extensions make it impossible to identify the exact anatomic limits of the jaw. Thus the technician is not able to prepare a precise functional impression tray.

The „Ludwigs-Technique“ allows to take the preliminary impression in the closed mouth under functional conditions. This is ensured by using the super-hard silicone Bisico Labosil blue or Bisico Lutesil V together with the VFA steel splint. After completion of the preliminary impression, it is removed from the impression tray. The VFA steel splint, embedded in the silicone, prevents the impression from deforming. In a next step, the preliminary impression can be converted, by trimming and grinding, into a customized tray with defined margins, of which the positional stability has to be verified under functional conditions.

In this way, the necessary precision is achieved - right from the beginning. This precision is maintained consistently during the whole process:

For particularly problematic jaw conditions, the physiological functional denture is the optimal solution. This is a permanently soft-lined prosthesis, with a base material which combines extremely high elasticity and low hardness (only 25 Shore A). This prosthesis is fabricated with integrated steel reinforcement and is absolutely biocompatible. Its long-term stability of several years ensures a wearing period which is unmatched.



Bite registration

Optimal bite registration.
Quick and unbreakable.



BITE REGISTRATION SILICONE

Precision and efficiency for bite registration

Regidur® i

heavy

Regidur® i is an addition-curing, super-hard and fast-curing silicone material for bite registration.

With an impressive final hardness of approx. 90 Shore A, Regidur® i is not only suitable for bite registration in fully or partially edentulous jaws, but also for precise registration and coding in complete denture prosthetics. The material is extremely easy to rework: it can be easily processed with a knife, stone or milling machine, which guarantees efficient adaptation.

Time saving and patient comfort

Thanks to the direct application from the cartridge, Regidur® i can be placed in the mouth quickly and easily. With a maximum curing time of just 45 seconds, the treatment time is minimized and the patient is hardly burdened at all.

Precise results without compromise

The high final hardness ensures a clear occlusion of the working models - free of any disruptive spring effects. At the same time, the registration impresses with its excellent elastic properties, which significantly reduce the risk of breakage despite its hardness.

ADVANTAGES:

- ✓ **Very good to rework:** with knife, stone or cutter - without risk of breakage
- ✓ **Short setting time:** 45 seconds - Minimal stress for the patient
- ✓ **Extremely high final hardness (90 shore A):** No spring effect between the models
- ✓ **Dimensionally accurate reset**
- ✓ **Scanable**



TECHNICAL DATA

Consistency: heavy
Color: magenta
Linear shrinkage: < 0,1%
Mixing time: n.a.
Working time (incl. mixing time): 15 sec.
Setting time in the mouth: < 45 Sek.
Final hardness: approx. 90 shore A

DELIVERY FORM

3 x 50 ml
 (incl. 18 mixing tips pink)
 Art.-No.: 71570
10 x 50 ml
 (incl. 50 mixing tips pink)
 Art.-No.: 71575



RECOMMENDATION

„Our secret for precise fits and maximum comfort: the Regidur i bite registration system from Bisico! With its outstanding properties, such as high final hardness and fracture-free finishing, it is our first choice for bite registrations!“

Dr. Levold, Dental practice Levold, Berlin

Regi-trans

medium

Regi-trans is a transparent matrix material based on addition curing vinyl silicones, which has been specially developed for precise dental impressions and individual occlusal registrations.

It enables the creation of customized transparent matrices for perfect adaptation to the tooth surface prior to preparation, e.g. for the fabrication of veneers. The transparent matrix then serves as a precisely fitting base for the light-activated restoration with high-quality composites.

In addition, Regi-trans is ideal as a transparent bite registration material that enables fast and extremely precise occlusal registration. Visual control of the occlusion during registration ensures exact adjustments. Thanks to the simple application from cartridges, Regi-trans can be applied directly to the tooth without bubbles - for reliable and high-quality results with every treatment.

TECHNICAL DATA

Consistency: medium
Color: clear - transparent
Linear shrinkage: < 0,1%
Mixing time: n.a.
Working time (incl. mixing time): 15 sec.
Setting time in the mouth: < 2 min..
Final hardness: approx. 70 shore A

DELIVERY FORM

3 x 50 ml
 (incl. 18 mixing tip green)
 Art.-No.: 71900



ACCESSORIES



Dispenser 50

For processing all 50 ml cartridges
 (mixing ratio 1 : 1)

Art.-No.: 01910



Mixing tips

DELIVERY FROM

Mixing tips pink, 50 pieces

Art.-No.: 01970

Mixing tips pink, 100 pieces

Art.-No.: 01975

Mixing tips green, 50 pieces

Art.-No.: 01980

Bite-Registration-Tips

For easier application of Regidur® i or Bisico® Regi-trans, the BRT is put on the pink mixing tip. Due to the flat, angled shape of the BRT, the material can be applied more precisely in the posterior dentition, even when the jaw is closed. Thus the occlusion can be monitored both before and during application of the material.

DELIVERY FORM

BRT white, 50 pieces

Art.-No.: 02100



Laboratory products

Useful consumables for dental technicians



SILICON

Labosil blue

kneadable / putty

Kneadable, addition-curing impression material. For all kinds of indexes, blocking out, fixations, fixings of occlusions, adjustments or similar applications, it is an indispensable material for laboratory work.

Thanks to its high final hardness of approx. 90 Shore A, the material is especially suitable for registrations and fixing of occlusions in the field of prosthetics. It is easy to trim with a knife, stone or bur.

TECHNICAL DATA

Consistency: putty
Colour (A/B): white/blue
Linear shrinkage: < 0,1%
Mixing time: 30 sec.
Working time (incl. mixing time): approx. 1:50 min.

Setting time (at room temperature): approx. 3 min.
Setting time in the mouth: < 2 Min.
Final hardness: approx. 90 shore A
Standard: ISO 4823, Type O, very high consistency

PACKAGING

600 ml (2 x 300 ml)
 Art.-No.: 01010
6600 ml (2 x 3300 ml)
 Art.-No.: 01020



SOFT RELINING MATERIAL

Softbase

Permanently soft denture relining material.

The most important feature of Softbase is its extraordinary long-term stability. The Softbase primer ensures an excellent connection between the denture base and the relining material. Softbase is compatible with denture materials based on PMMA or PEMA. The relining of a denture can be done intraorally or extraorally. The Softbase varnish gives the relining a high-gloss surface which is very pleasant for the patient.



TECHNICAL DATA

Colour: pink, translucent
Consistency: viscous
Mixing time: not applicable
Application time: max. 1 min.
Setting time in the mouth: approx. 4:00 min.
Setting time until finishing: approx. 8-9 min., in warm water (approx. 40°C) 5 min.
Final hardness: approx. 27 shore A

PACKAGING

Complete set

- 1 x 50 ml cartridge
- 6 mixing tips pink
- 4 ml Softbase Primer
- 2 x 5 ml Softbase Varnish
- brush set and 1 mixing pallet

Art.-No. 73810

1 x 50 ml cartridge
 Art.-No. 93810
Softbase Varnish
2 x 5 ml
 Art.-No. 13850
Softbase Primer
4 ml
 Art.-No. 13860

LIGHT-CURING TRAY MATERIAL

Bisi-Tray

Light-curing material for the production of individual trays.

The prefabricated pink colored templates guarantee a uniform material thickness in all areas of the tray and ensure maximum stability and torsional rigidity.

Thanks to its high flexural and breaking strength, Bisi-Tray provides a reliable basis for precise work in the dental laboratory. Curing is effortless with all standard light-curing units.

A special highlight: Bisi-Tray is easy to shape without sticking to hands or tools and enables problem-free finishing with all common rotary instruments.



DELIVERY FORM

Light-protection box with 50 pieces pink

Art.-No.: 03250

GINGIVAL MASK

Gingiform

Addition-curing scannable silicone used for fabricating flexible gingival masks in natural colour when preparing the insertion of an implant.

Thanks to its application directly out of the cartridge, Gingiform is easy to use and characterized by a high tear resistance and dimensional stability. The high final hardness of 70 Shore A makes for ideal finishing (cutting, milling).

Due to its optimal elasticity, accurate repositioning of the gingival mask is possible.



TECHNICAL DATA

Colour: pink
Consistency: heavy
Mixing time: not applicable
Working time (incl. mixing time): approx. 1:40 min.
Setting time: approx. 4 min.
Final hardness: approx. 70 shore A

PACKAGING

Gingiform Set

- 50 ml cartridge
- 6 mixing tips yellow
- 85 ml Separator

Art.-No.: 05400

Refill 50 ml cartridge
 6 mixing tips light blue, pointed
 Art.-No.: 05410
Separator
 Pump spray 85 ml
 Separator: Silicone / Silicone
 Art.-No.: 05420

DUBLICATING SILICONE

Bisico® Double



Addition-curing duplicating silicone.

Bisico® Double meets strictest high requirements concerning the production of model duplicates in the field of dentistry. Due to its mixing ratio of 1:1, its excellent elasticity and extreme tear resistance, easy handling is ensured. The hardness of approx.

22 Shore A prevents free-standing teeth from breaking during deinvestment. Bisico® Double is suitable for mixing both by hand and by means of automatic dispensing and mixing appliances.

TECHNICAL DATA

Color: green
Linear shrinkage: < 0,1%
Mixing ratio: 1:1
Mixing time: approx. 1 min. (not applicable when using mixing appliances)
Working time (incl. mixing time): approx. 5 min.
Setting time: 25 - 30 min.
Final hardness: approx. 22 shore A

PACKAGING

2 kg
 (1 kg each of A and B component)
 Art.-No.: 04010
10 kg
 (5 kg each of A and B component)
 Art.-No.: 04030

METAL PRIMER



Best Metal Primer

Primer on the basis of methylmethacrylates, which fabricates a good, long-term bond between acrylics / composites and all types of metal.

ADVANTAGES:

- Light curing not necessary
- Easy and quick working
- Very good adaption properties (easy application)
- Primer for metals of all kinds
- Homogeneous metal coating
- Strong adhesion between metal and composite materials

TECHNICAL DATA

Bond strength after 48 h storage
 at 100 °C in Mpa
Titanium 23,3
Gold 21,1
Cr-Co 22,4

PACKAGING

5 ml bottle
 Art.-No.: 76000

Restoration

Bisico® Bielefelder Dentsilicone GmbH & Co. KG



bisico®

TABLE OF CONTENT

■ Bondings & Etching gel

- 05 My Bond LC
- 06 E-Bond DC
- 06 Bond LC
- 07 Best Etch
- 07 Accessories

■ Composite

- 10 My Bio
- 11 My Bio flow-viscous
- 12 Nanofill unique
- 13 Nanofill unique flow
- 14 Nanofill n
- 15 Nanofill flow
- 16 Micro Esthetic
- 17 Micro Esthetic Gingiva
- 18 Bulk Fill
- 19 BisiCAL (Pulp capping)
- 21 Repo-Core DC (Core build-up)
- 22 Accessories

■ Cements

- 24 Cementime DC
- 24 Cem DC
- 25 E-Cem DC
- 26 Glass Cem
- 26 Glass Fill
- 26 Accessories

■ Temporary Materials

- 29 Provi Temp K
- 30 Provi Bond K
- 30 Temp S
- 31 Accessories

Bondings & Etching gel

Modern solutions for durable and
aesthetic dental restorations



BONDINGS

My Bond LC

My Bond LC is a self-etching, light-curing one-component bonding agent for the secure and reliable luting of restorative composites on natural tooth structure and for the luting of indirect restorations made of composites and ceramics in a single step.

Suitable for: Self-Etch-Technique und Selective-Etch-Technique

INDICATIONS:

- Direct, light-curing composite restorations on the natural tooth.
- Core build-ups with light- and dual-curing composite.
- Indirect restorations made of composite and ceramic (inlays, onlays, veneers, crowns) with light- and dual-curing luting cements.
- Repair of fractured composite fillings.

ADVANTAGES:

- ✓ **One-component system:** Etching, priming and bonding in one step – saves time and reduces stress.
- ✓ **High security:** Optimised viscosity and thixotropy ensure an absolutely homogeneous adhesive layer to prevent „pooling“.
- ✓ **Perfect edge seal:** Long-lasting high marginal integrity between composite enamel/dentin prevents secondary caries.
- ✓ **Gentle etching:** With a pH value > 2, the risk of postoperative hypersensitivity is minimised.
- ✓ **Strong adhesion:** 26 MPa on dentin and 24 MPa on enamel guarantee durable and stable restorations.
- ✓ **Free of TEGDMA- and MMA:** My Bond LC offers good biocompatibility and protects the surrounding tissue from irritation.

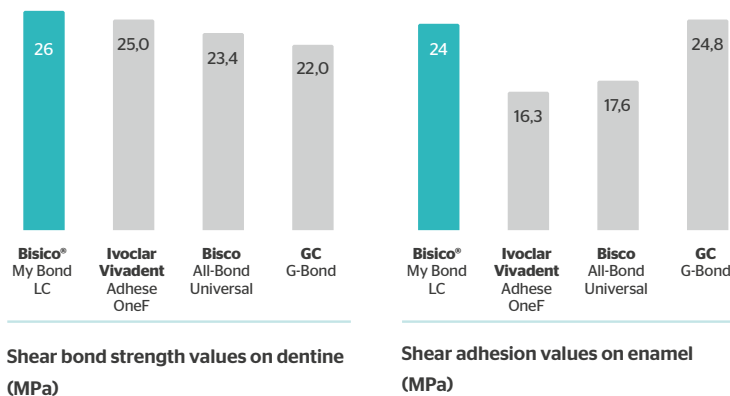


Honey-like, user-friendly consistency

DELIVERY FORM

5 ml Bottle

incl. 1 brush holder, 25 EW brushes, Mixing modules (6-well)
Art.-No.: 75267



Shear bond strength values on dentine (MPa)

Shear adhesion values on enamel (MPa)

E-Bond DC

E-Bond DC is an innovative, easy-to-use, self-etching, dual-curing adhesive that enables a durable and strong bond of composites, compomers and resin-modified glass ionomer cements to enamel and dentin. It offers optimum adhesion values on slightly moist surfaces and can be applied in just one working step.

INDICATIONS:

- Core build-ups with dual- and self-curing composites (e.g. Repo-Core DC)
- Luting of root canal posts with dual- and self-curing composite cements (e.g. Cem DC)
- Luting of inlays, onlays, crowns and bridges with dual- and self-curing composite cements (e.g. Cem DC)
- Restorations with dual-curing, self-curing and light-curing composites

ADVANTAGES:

- ✓ **Efficiency:** Combines the etching, cleaning, bonding and desensitizing steps in one product, saving time and minimizing post-operative sensitivity.
- ✓ **Dual-curing:** Supports self-curing and light-curing materials, even in hard-to-reach areas.
- ✓ **Versatility:** Can be used in self-etch, selective-etch or total-etch techniques



DELIVERY FORM

Set with 2 x 5 ml bottles
(black and red)

- 25 EW-brushes
- 1 Brush holder
- 4 Mixed pallets,
black (6-well)

Art.-No.: 75250

Bond LC

Bond LC is an easy-to-use, light-curing, one-component priming and bonding system.

Suitable for: Total-Etch Technique

Bond LC is designed to provide a strong bond between composites, compomers and metals to enamel and dentin as well as to precious and non-precious metals. Bond LC is also suitable for impregnating root canals prior to filling or cementing root posts. It can also be used as a primer for indirect bonding restorations cemented with a dual-curing cement. Bond LC is compatible with all light-curing composites currently on the market. It is ethanol based and highly hydrophilic. Therefore, Bond LC can be used on slightly moist dentin surfaces using the „wet bonding technique“.



DELIVERY FORM

5 ml Bottle
(incl. 25 brushes, 1 brush holder, 4 mixing pallets black (6-well))
Art.-No.: 75260

ETCHING GEL

Best Etch

Best Etch is an etching gel with excellent thixotropy, based on 37% phosphoric acid.

Suitable for: Selective-Etch- oder Total-Etch-Technique

The included applicator tips allow for easy and safe application to the exact areas to be etched. Blue coloration facilitates targeted application to enamel and dentin.

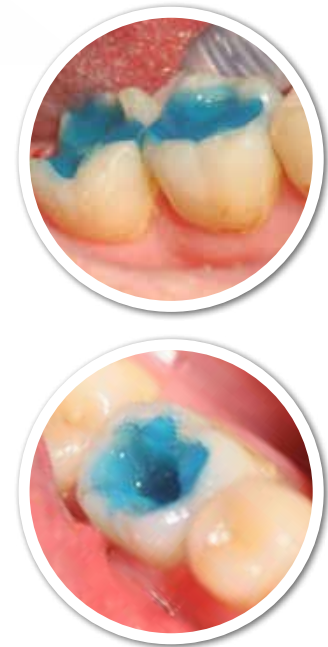
INDICATIONS:

- Composite fillings
- Fissure sealings
- Adhesive luting of inlays, onlays, crowns and bridges (with suitable composite cement systems)

DELIVERY FORM

2 ml syringe
(incl. 5 Appli-Tips)
Art.-No.: 75280

25 ml syringe
(incl. 50 Appli-Tips blue,
8 refill syringe 3 ml,
8 Adapter)
Art.-No.: 75282



ACCESSORIES



Appli-Tips

DELIVERY FORM

Blue, 100 pieces
Art.-No.: 01806



Mixing Pallet

DELIVERY FORM

Plastic, black, 50 pieces
with 6 deepenings
Art.-No.: 01802



Brush

DELIVERY FORM

Brush holder, blue, 1 piece
Art.-No.: 01804

Composites

Highest aesthetics (transparency, translucency, opalescence)
- with first-class finishing.



Innovative restoration solutions for efficiency and versatility – **Made in Germany**

Our comprehensive product range of dental composites offers you customized solutions for all cavity classes, enabling you to work highly efficiently. All products are perfectly matched and can be easily combined to meet your needs in any restorative situation. From flowable to packable composites, the versatility of our materials leaves nothing to be desired.

Our composites have been developed to work well with our bonding systems, ensuring reliable adhesion and long lasting quality. We recommend our proven Bisical, which forms tertiary dentin to provide additional pulp protection, especially for fillings close to the pulp. Repo-Core DC, our dual-curing flow composite, is recommended for core build-ups and root post luting as it is easy to use and extremely strong.

Trust the Made in Germany quality of our composites and benefit from a perfectly matched product range that gives you maximum flexibility and efficiency in your daily practice.



My Bio

My Bio is a light-curing, radiopaque biocomposite that meets the highest demands for physical and aesthetic properties and biocompatibility. My Bio is free from the monomers BIS-GMA (BPA), TEGDMA, HEMA and EGDMA, which are often the cause of allergies and intolerances in resin fillings.

INDICATIONS:

- Direct anterior and posterior restorations of Class I, II, III, IV and V cavities according to Black
- Inlays, Onlays and Veneers
- Extended fissure sealing for molars and premolars
- Core build-ups
- Splinting of loose teeth
- Improve aesthetics with shape and colour corrections

ADVANTAGES:

- ✓ **Highest biocompatibility:** My Bio is BisGMA (BPA)-, TEGDMA-, HEMA- and EGDMA-free, making it an ideal choice for patients with allergies and intolerances. My Bio not only offers an aesthetic restoration, but also protection against allergic reactions.
- ✓ **Easy handling:** Thanks to its perfect consistency and polishability, My Bio is smooth, pleasant to work with and does not stick to the instruments. The easy handling makes dentists' work easier and enables high-quality, precisely contoured restorations.
- ✓ **Increased security:** With an excellent radiopacity of 250% Al, My Bio ensures accurate diagnosis and treatment. This increased visibility improves the ability to detect and diagnose potential problems, leading to optimal oral health outcomes.
- ✓ **Vibrant colors:** My Bio offers high shade intensity for aesthetically pleasing results. The innovative chromatic shade system enables the fabrication of lifelike, natural-looking restorations.

PACK-
ABLE



DELIVERY FORM

4g syringe

Shade:

A1: 78000

A2: 78010

A3: 78020

bleach: 78030



„The patient presented with an old filling that had spread in a mesial-occlusal-distal direction. Secondary caries was found under the filling, so the entire old filling and carious area were removed. The new filling in shade A3 was then built up in layers with MyBio using an AutoMatrix to restore the original mesial-occlusal-distal spread. The mesial wall, occlusal surface and distal wall were rebuilt, while the lingual and buccal walls were retained from the patient's own tooth. The finished restoration was then finished using Sof-Lex discs, a red diamond and rubber polishers. I was delighted with the excellent handling and the natural, aesthetic appearance of the restoration.“

Dr. Deike Seidel, Dental practice Dr. Seidel Harsewinkel

“

My Bio flow-viscous

My Bio flow-viscous is a highly viscous, highly radio-opaque (210% AI) biocomposite specifically designed for small fillings in Class I-III and Class V restorations. It is also ideal for sealing fissures, correcting enamel defects, blocking out undercuts and making small corrections to the shape and colour of enamel. With a filler content of 77% by weight, My Bio flow viscous has a high viscosity and is easy to apply without dripping.

INDICATIONS:

- Fissure sealing
- Extended fissure sealing on molars and premolars
- Fillings of class V according to Black (cervical caries, root erosions, wedge-shaped defects)
- Minimally invasive fillings of classes I, II and III according to Black
- Correction of dental enamel defects
- Blocking out of undercuts
- Minor shape and colour corrections on the enamel



DELIVERY FORM

2g syringe

Shade:

A1: 75075

A2: 75070

A3: 75071

A3,5: 75072

ADVANTAGES:

✓ Biocompatibility and versatility

Its excellent biocompatibility - free of Bis-GMA (BPA), TEGDMA, HEMA and EGDMA - makes My Bio flow-viscous a safe choice for clinical applications. It is the flowable equivalent of our proven My Bio composite, offering the same high quality and compatibility in an easy-to-use, flowable form.

✓ Optimised flow properties and ease of use

My Bio flow-viscous is ideal as an underliner for our composites My Bio, Mirco Esthetic and Nanofill n. With a high filler content of 77% by weight glass filler, My Bio flow-viscous has optimal flow properties. It penetrates even the smallest areas and can therefore be used as the first layer under normal composites such as My Bio, Mirco Esthetic or Nanofill n. The high viscosity facilitates the restoration of smaller cavities and Class V cavities.

✓ Outstanding physical properties

My Bio flow-viscous has excellent physical properties such as low polymerisation shrinkage, high abrasion resistance and excellent flexural strength. These properties contribute to long-lasting, stable restorations.

Nanofill unique® is excellently suited for whitening processes, the restoration appears in the whitened tooth shade.

Nanofill® unique

Nanofill unique is a universal shade nano-hybrid composite, suitable for direct and indirect restorations such as inlays, onlays and veneers, as well as class I-V cavities. Thanks to the chameleon effect of Nanofill unique, all classic Vita® shades are covered.

With a translucency of 8%, Nanofill unique allows excellent color matching of the restoration to the natural tooth color of the adjacent tooth structure. By absorbing and reflecting incident light, the color of the adjacent tooth structure is matched. This allows the restoration to blend almost invisibly with the natural tooth color.

Aesthetics and handling

Nanofill unique offers excellent aesthetic properties and easy handling. It is easy to model and adapts perfectly to the cavity walls. The high polish ability gives the finished restoration a perfect gloss. Thanks to its excellent physical properties, long-lasting restorations are guaranteed.

Efficiency and warehousing

Almost the entire color spectrum is covered with just one composite. This avoids overlapping of rare colors and reduces stock levels. Nanofill unique enables efficient working by eliminating the need for color definition and minimizing errors due to incorrect color selection.

INDICATIONS:

- Direct anterior and posterior restorations in Black's classes I, II, III, IV, and V cavities.
- Inlays, onlays and laminate veneers
- Extended fissure sealing in molars and premolars
- Stump build-up
- Splinting loose teeth
- Adjusting the contours and shades to improve aesthetics

ADVANTAGES:

- ✓ Covers all classic VITA® shades thanks to the chameleon effect
- ✓ Excellent color matching with 8% translucency
- ✓ Easy modeling and optimal cavity adaptation
- ✓ Highest polish ability for perfect shine
- ✓ Long-lasting restorations thanks to outstanding physical properties
- ✓ Efficient workflow thanks to simplified color selection

Physical values

	BISICO NANOFILL UNIQUE	COMPETITORS
Flexural strength [MPa]	150	107
E-modul [GPa]	12655	9524
Compressive strength [MPa]	479	394
24h Vickers-hardness [MPa]	690	610



PACK-
ABLE

DELIVERY FORM

4g syringe

Shade universal, Art.-No.: 74160

20 capsules á 0,3g

Shade universal, Art.-No.: 74161

Video



Video



Clinical case



Chameleon effect

Nanofill® unique flow

Nanofill unique flow is a light-curing, flowable and highly radiopaque (210% Al) composite with high viscosity. This innovative material solution offers a universal shade option that can be used in a variety of everyday cases. Thanks to its chameleon effect (4% to 5% translucency) and excellent shade matching properties, Nanofill unique flow ensures natural and highly aesthetic restorations. The composite blends seamlessly into the patient's natural tooth environment, regardless of tooth shade. This means that restorations always look natural.

Wide range of applications

Nanofill unique flow is suitable for a wide range of indications. The ideal flow characteristics facilitate the restoration and adapt perfectly to the cavity walls. Easy application without droplet formation makes the working process efficient and precise.

Biocompatibility and safety

Nanofill unique flow is characterized by its high biocompatibility. It is free from BisGMA (BPA), TEGDMA, HEMA and EGDMA, which significantly increases safety and compatibility for your patients. These properties make Nanofill Unique Flow a safe choice for patients.

INDICATIONS:

- Fissure sealing
- Extended fissure sealing on molars and premolars
- Fillings in Black's class V cavities (cervical caries, eroded areas in roots, wedge-shaped defects)
- Minimally invasive fillings in Black's class I, II, III
- Correction of dental enamel defects
- Blocking out undercuts
- Minor shape corrections on the enamel

ADVANTAGES:

- ✓ **Light-curing and flowable:** For precise and easy handling.
- ✓ **High X-ray opaque (210% Al):** For best visibility on X-ray images.
- ✓ **Free from BisGMA (BPA), TEGDMA, HEMA and EGDMA:** Suitable for allergy sufferers.
- ✓ **Chameleon effect:** Seamless integration and natural aesthetics.
- ✓ **Excellent color matching:** Perfect adaptation to the natural tooth shade.
- ✓ **Versatile application:** For direct restorations, relinings and fissure sealing.



DELIVERY FORM

20 Capsules á 0,3g

Shade universal, Art.-No.: 74063

**DELIVERY FORM****Syringe starter kit**

- 6 x 4 g syringes, shades: A1 / A2 / A3 / A3,5 B2 / C (to VITA®)
 - Bond LC, 5 ml
 - Etch, 2 ml
 - Nanofill flow, 2 g
- Art.-No.: 75030

Refill syringes each 4 g

- A1:** Art.-No.: 74080
A2: Art.-No.: 74000
A3: Art.-No.: 74010
A3,5: Art.-No.: 74020
A4: Art.-No.: 74090
B1: Art.-No.: 74100
B2: Art.-No.: 74030
B3: Art.-No.: 74110
EW: Art.-No.: 74050
Clear: Art.-No.: 74040
OA: Art.-No.: 74140
Bleach: Art.-No.: 74150

Bisico Nanofill n®

The high-performance nano-composite for aesthetic restorations

Bisico® Nanofill n is an innovative, nano-filled, light-curing and high-gloss polish able composite material with excellent handling and universal applicability. Thanks to its special nano-filler technology, it offers outstanding physical properties and is easy to model, dimensionally stable and does not stick to the instrument.

The material is versatile and can be used in both the anterior and posterior regions. The ultra-fine nanofillers enable particularly homogeneous and highly polish able restorations with natural aesthetics. The high filler content of 83.54 % ensures a high material density and reduces polymerization shrinkage to less than 2 %.

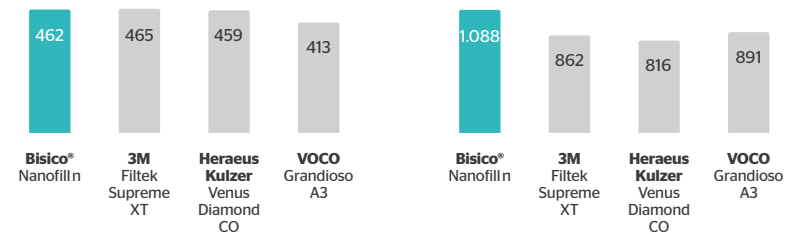
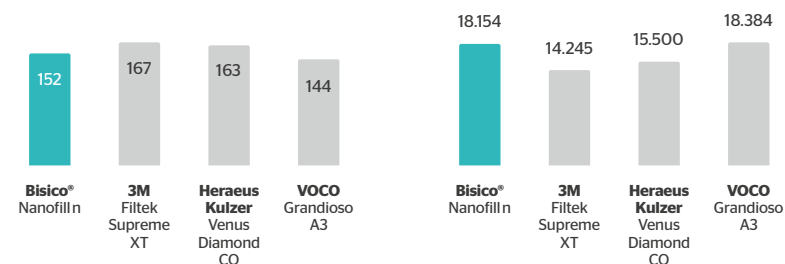
Nanofill n also offers excellent radiopacity. The flexible shade system includes 8 dentin shades, an opaque shade, an incisal shade and a custom characterization shade to create lifelike, detailed restorations.

INDICATIONS:

- Direct anterior and posterior tooth restorations in Black's classes I, II, III, IV and V.
- Indirect restorations such as inlays, onlays and veneers
- Extended fissure sealing on molars and premolars
- Building up stumps
- Splinting of loosened teeth
- Corrections of shape and color to enhance aesthetics

ADVANTAGES:

- ✓ Optimized processing width and handling
- ✓ Nano technology
- ✓ High physical values
- ✓ Excellent mechanical properties
- ✓ Wide range of colors

**Compressive strength (MPa)****Vickers hardness (MPa)****Flexural strength (MPa)****E-Modul (MPa)**

**DELIVERY FORM**

Syringe each 2 g
(incl. 5 Appli-Tips black)

Shade A1

Art.-No.: 74062

Shade A2

Art.-No.: 74061

Shade A3

Art.-No.: 74060

Shade A3,5

Art.-No.: 74070

Nanofill® flow

Nanofill flow - The modern filling material with real nanotechnology

Nanofill flow is an innovative, flowable and light-curing restorative material specially developed for use in Class I-III and V cavities. Based on advanced nanotechnology, it combines excellent physical properties with high aesthetics and user-friendly handling.

INDICATIONS:

- Fissure sealing
- Extended fissure sealing on molars and premolars
- Fillings in Black's class V cavities (cervical caries, eroded areas in roots, wedge-shaped defects)
- Minimally invasive fillings in Black's class I - III cavities in areas not exposed to severe occlusal loads
- Restoring defects in enamel
- Blocking out undercuts
- Minimal adjustments to the contours and shade of the enamel

ADVANTAGES:

- ☑ **Optimum flow ability and high filling content:** Nanofill flow can be inserted into the cavity in a precise and controlled manner and retains its dimensional stability due to its high filler content
- ☑ **Low polymerization shrinkage:** Minimal shrinkage ensures excellent edge sealing and reduces the risk of edge gaps.
- ☑ **High abrasion and flexural strength:** Robust structure makes Nanofill flow extremely resistant to wear and breakage - ideal for long-lasting fillings.
- ☑ **Exact color matching:** Nanofill flow is available in the shades A1, A2, A3 and A3.5 according to the Vita shade system and perfectly matches the aesthetic line of Nanofill n, for natural and harmonious dental restorations.

Micro Esthetic

Light-curing micro-hybrid composite.

The light-curing micro-hybrid composite Micro Esthetic is ideal for a wide range of dental restorations. With excellent modeling and high-gloss polish ability, it is the perfect solution for anterior and posterior restorations.

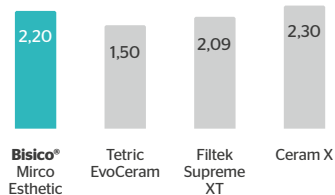
The high abrasion resistance ensures the durability of the fillings thanks to a particularly dense filler structure with particle sizes of 0.05 to 1.5 μm , which guarantees the durability of the restorations. The material also adapts perfectly to the edges and walls of cavities, resulting in an optimum fit.

An aesthetic appearance that also shines under artificial light sources ensures natural integration into the tooth structure. The transparency and translucency of Micro Esthetic are specially matched to the natural tooth structure, so that your restorations are not only functional but also aesthetically pleasing.

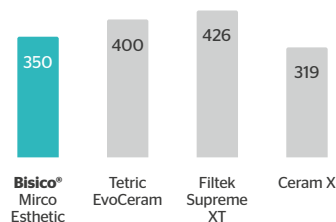
In addition, Micro Esthetic meets the strict requirements of the ISO 4049 standard with a high radiopacity of over 210 % Al and thus offers you additional safety during treatment.

ADVANTAGES:

- ✓ Aesthetic appearance, even under artificial light sources.
- ✓ Highest abrasion resistance due to dense filler structure with particle sizes of 0.05 - 1.5 μm .
- ✓ Excellent high-gloss polish ability.
- ✓ Particularly good modeling properties and best adaptability to the edges and walls of cavities.
- ✓ Transparency and translucency are adapted to the natural tooth structure.
- ✓ High radiopacity, > 210 % Al



Shrinkage (MPa)



Compressive strength (MPa)



DELIVERY FORM

Starter Set syringes

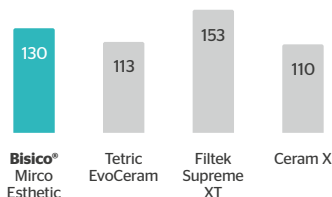
- 6 x 5 g syringes shades: A1, A2, A3, A3.5, B2, OA (to VITA®)
 - E-Bond LC, 5 ml
- Art.-No.: 75050

Refill syringes each 5 g

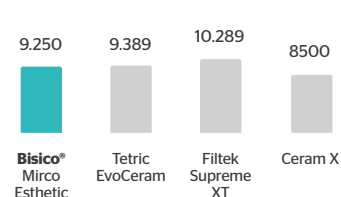
- A1:** Art.-No.: 75003
- A2:** Art.-No.: 75000
- A3:** Art.-No.: 75001
- A3,5:** Art.-No.: 75002
- A4:** Art.-No.: 75007
- B1:** Art.-No.: 75008
- B2:** Art.-No.: 75004
- OA:** Art.-No.: 75005
- Clear:** Art.-No.: 75009
- Bleach:** Art.-No.: 75012

Capsules 20 x 0,3 g

- A1:** Art.-No.: 75103
- A2:** Art.-No.: 75100
- A3:** Art.-No.: 75101
- A3,5:** Art.-No.: 75102
- B2:** Art.-No.: 75104
- Grey:** Art.-No.: 75103



Flexural strength (MPa)



E-Modul (MPa)



Picture: Dentist Tomás Ribeiro

FLOW-
ABLE



Micro Esthetic Gingiva

Micro Esthetic Gingiva is a flowable, gingiva-colored composite for the aesthetic restoration of recessions. It is applied directly in the patient's mouth.

The different shades - light, medium, dark and superdark - of Micro Esthetic Gingiva can be layered and mixed. This ensures that the individual color of the natural gingiva is reproduced exactly. Micro Esthetic Gingiva can be worked into the natural gingiva without leaving any residue and ensures long-term hygiene.

ADVANTAGES:

- ✓ Can be layered and mixed to exactly reproduce the shade of the natural gingiva
- ✓ Simple color system
- ✓ High X-ray opaque (210% AI)
- ✓ Easy handling
- ✓ Free from Bis-GMA (BPA), HEMA, TEGDMA, EGDMA
- ✓ Good polish ability
- ✓ Ensuring long-term hygiene
- ✓ Bonding with E-Bond LC (light-curing, self-etching) on dentin and enamel

DELIVERY FORM

Starter kit

- 4 x 2 g Syringes
 - Shades: G-L, G-M, G-D, G-SD
 - 20 Appli-Tips black
 - Color ring Micro Esthetic Gingiva
- Art.-No.: 75080

Syringes each 2g

(incl. 5 Appli-Tips black)

Shade G-L

Art.-No.: 75076

Shade G-M

Art.-No.: 75077

Shade G-D

Art.-No.: 75078

Shade G-SD

Art.-No.: 75079

No additional layer required

Bisico® Bulk Fill

The all-rounder with perfect flow properties.

Bisico® Bulk Fill is a flowable composite for reliable direct restorations in the posterior region with excellent physical properties. The entire cavity can be filled in a layer up to 4 mm thick using the bulk fill technique. This makes daily work easier and faster.

INDICATIONS:

- Fillings with layer thicknesses of up to 4 mm for Class I cavities
- Base fillings/liners with layer thicknesses up to 4 mm in Black's class II cavities. For the following layers in a class II cavity, only use composites which are suited to filling Black's class II cavities.
- Cavity lining - as a first (bottom) layer in Black's class I and II cavities

Thanks to its consistency, it is easy to model and flows very well to the cavity walls. The thin application cannulas of the bulk-fill fillers allow safe application and bubble-free adaptation of the composite to the cavity walls and base.

The high filler content and high elasticity guarantee low shrinkage of less than 3%. Bisico® Bulk Fill is available in the shades light and medium. Thanks to the chameleon effect, the filling adapts perfectly to the natural tooth shade. Restorations with Bisico® Bulk Fill are very easy to finish and polish. Bisico® Bulk Fill is Bis-GMA (BPA), HEMA, TEGDMA, EGDMA free and therefore has excellent biocompatibility.



ADVANTAGES

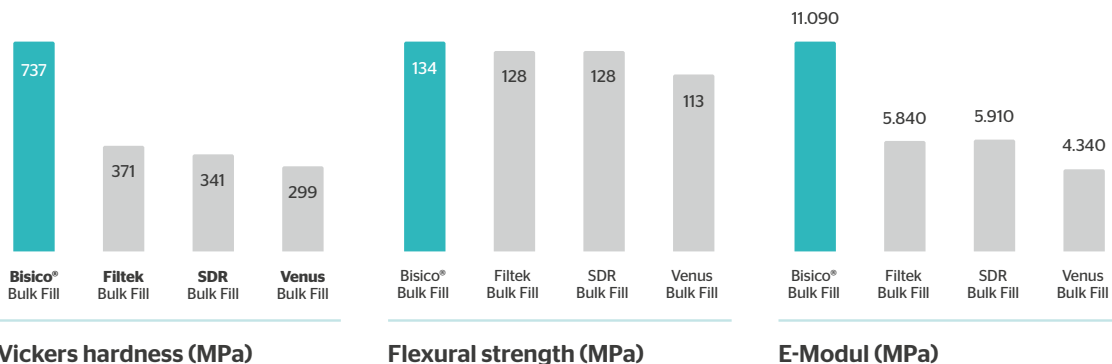
- ✓ **Stabil** – Excellent physical properties, low shrinkage, high elasticity
- ✓ **Time-saving** – Simple, fast application using the bulk-fill technique, 4 mm layer thickness
- ✓ **Aesthetic** – Universal dentin shade with natural color matching
- ✓ **Flowable** – Excellent adaptation to cavity bases and cavity walls
- ✓ **High viscosity** – Modelable, does not drip
- ✓ **Radio opaque** – Reliable diagnoses thanks to high radiopacity
- ✓ **Highest biocompatibility** – Free from Bis-GMA (BPA), HEMA, TEGDMA, EGDMA

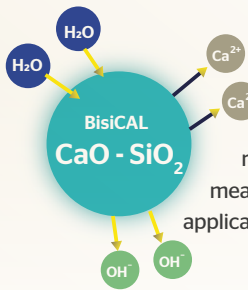
DELIVERY FORM

2 x 2g syringe, inkl. 10 Appli-Tips
Shade light, Art.No.: 75054
Shade medium, Art. No.: 75059

20 x 0,3g capsules,
Shade light, Art.-No.: 75052

20 x 0,3g capsules
Shade medium, Art.-No.: 75057





BisiCAL®

BisiCAL is a bioactive, light-curing pulp capping material that has been specially developed to build an effective protective barrier for the dental pulp and ensure the long-term vitality of the tooth. The combination of resin-reinforced formulation and MTA fillers (mineral trioxide aggregate) means that BisiCAL combines the highest bioactive properties with excellent application safety.

INDICATIONS:

■ Direct pulp capping for any pulpal exposures, including:

- carious pulp exposure
- mechanical pulp exposure
- pulp exposures due to trauma

■ Indirect pulp capping agent in deep preparations:

- under Class I and Class II composite restorations
- under cements
- as an alternative to calcium hydroxide



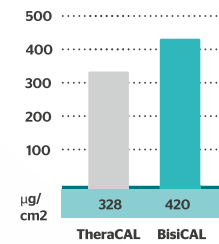
ADVANTAGES:

- ✓ **Stimulates tertiary dentine formation and healing:** Thanks to bioactive fillers, tertiary dentin (hydroxyapatite ($\text{Ca}_5(\text{PO}_4)_3(\text{OH})$) is formed by releasing Ca^{2+} and OH^- ions. The pulp is protected and supported in healing.
- ✓ **High pH value for antibacterial effect:** The alkaline pH of BisiCAL is bactericidal and creates a sterile environment. This not only protects the pulp from infection, but also reduces the risk of hypersensitivity.
- ✓ **Light curing for fast and controlled application:** BisiCAL cures in 40 seconds, allowing rapid treatment without long waiting times. Single-component structure eliminates complicated mixing procedures and potential application errors.
- ✓ **Precise application and thixotropy:** Thanks to its thixotropic properties, BisiCAL can be applied accurately and precisely even in deep cavities. The supplied fine needle tip allows precise dosing and positioning of the material.
- ✓ **Moisture tolerance and high radio opacity:** BisiCAL is highly resistant to moisture, making it easy to use in challenging clinical situations. In addition, its good radiopacity ensures that the material is easily visible on X-rays during follow-up examinations.

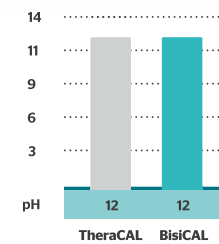


DELIVERY FORM

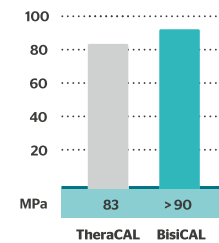
- BisiCAL 1g syringe,**
Art.-No.: 76500
incl. 12 Appli-Tips
- BisiCAL 4 x 1g syringe,**
Art.-No.: 76510
incl. 50 Appli-Tips



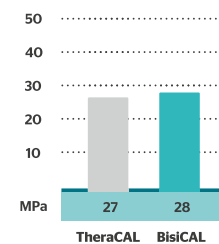
Calcium release after 24 h (µg/cm²)



pH Value after 24 h



Compressive strength (MPa)



Flexural strength (MPa)



„BisiCAL simplifies and accelerates the entire workflow for the placement of deep restorations and the preservation in daily routine and ensures the treatment result.“

Dentist
Dr. Benjamin Kette M.Sc



”

„BisiCAL can be easily integrated into the conservative treatment workflow and facilitates indirect and direct pulp coverage due to its good workability, applicability and light-curing properties.“



Dentist Romy Dech

“



”

„The direct application of BisiCAL using a syringe enables hygienic and stress-free application. Good adaptation to the cavity wall and easy removal of excess are other positive features of this product.“

Dental practice Bäßler



“



Repo-Core DC

Repo-Core DC is an innovative dual-curing, flowable and radiopaque composite material that has been specially developed for core build-ups and the cementation of root canal posts. Available in practical 5 ml mini syringes or 25 ml cartridges, Repo-Core DC can be applied directly and bubble-free into the cavity or around the root canal post.

INDICATIONS

- Core build-ups
- Cementing of posts
- Cementing of crowns and bridges, inlays and onlays

ADVANTAGES:

- ✓ **Dual hardening for flexible application options:**
Cures in just 3:30 minutes with low heat development, allowing reliable curing with limited light, especially useful for deep root canals.
- ✓ **Excellent flowability and stability:**
Repo-Core DC is specially formulated to penetrate deep into the root canal and provide a reliable adhesion. The combination of high flowability and stability allows for precise and stable core build-ups that can be used safely even in challenging situations.
- ✓ **Optimum compressive and flexural strength:**
The mechanical properties of Repo-Core DC, such as a compressive strength in the optimal range for dentin (330 MPa) and a flexural strength of 140 MPa, give the material the necessary stability to withstand the daily stresses caused by chewing pressure and other mechanical influences. Due to its high final hardness, Repo-Core DC can be processed and polished like dentin.
- ✓ **Two color options for a variety of applications:**
Available in blue and A3. The blue shade enables visual differentiation from dentin, while the A3 shade is ideal for aesthetic restorations and restorative ceramics.

Tip: Optimum results are achieved in combination with the bonding agent E-Bond DC.



© Copyright:
Zahnarzt Klaus Ludwigs



DELIVERY FORM

Color A3, 25 ml cartridge

(incl. 15 Mixing-tips light blue flat, 15 IOT yellow) Art.-No.: 75220

Color A3, 5 ml syringe

(incl. 10 Mixing-tips Core, 10 IOT Core)
Art.-No.: 75200

Color blue, 5 ml syringe

(incl. 10 Mixing-tips Core, 10 IOT Core)
Art.-No.: 75210

COMPOSITE ACCESSORIES

COMPO-JECT

made by Ronvig

Very easy-to-use applicator for dental composite materials in manufacturer prefilled unit dose tips (Compules or Fillies) for direct application..

- ☑ Easy extrusion, no matter viscosity - less effort required
- ☑ Easy to load and unload without retracting the plunger
- ☑ Easy to reach all areas of the oral cavity
- ☑ The tip is safely fixed and can be rotated 360°
- ☑ Made from high grade
- ☑ Can be sterilized by any method
- ☑ 5-year guarantee on material and construction



Art.-No.: 20012

Mixing Tips

for core build-up

DELIVERY FORM

Colibri, needle mixing tips, N11

green, 25 pieces

Art.-No.: 03770

Mixing-tips brown, 1:1

Art.-No.: 03740

IOT yellow

Art.-No.: 01965



Color ring Nanofill

DELIVERY FORM

Shades: A2, A3, A3.5, B2, EW, C

Art.-No.: 75110

Cements

Reliable cementing - at the highest level.



Reliable Cements for the Highest Standards – Made in Germany

Our innovative luting materials offer dentists the perfect solution for every clinical situation - from temporary to permanent restorations. All products combine state-of-the-art technology with the highest quality „Made in Germany“ to guarantee optimal results for you and your patients.

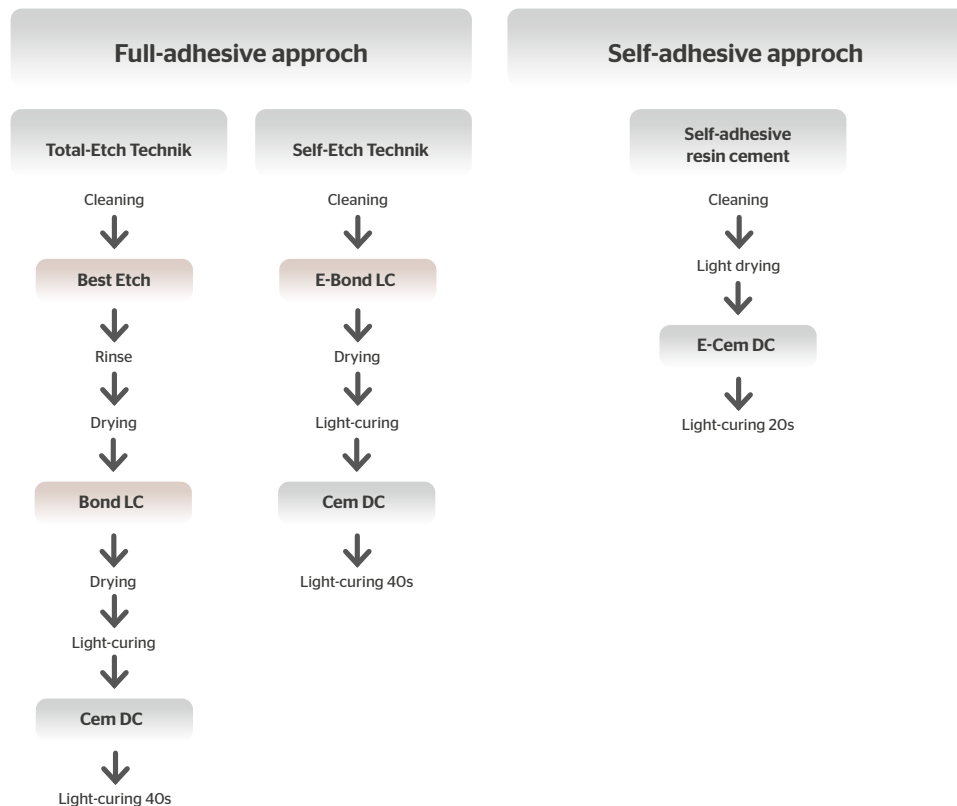
THE PRODUCT RANGE AT A GLANCE:

- **Provi Bond K** (temporary): Eugenol-free, with reliable adhesion and clean removal - ideal for safe temporary use ideal
- **Cementime DC** (semi-temporary): Strong adhesion paired with non-destructive removal of the restoration. Antibacterial protection with zinc - safe and practical.
- **Cem DC** (permanent): Provides a strong bond, impressive color stability and is dual-curing - for long-lasting results in perfection.
- **E-Cem DC** (permanent): Self-etching, dual-curing universal cement that combines fast application, long-lasting hold and protection against post-operative discomfort - for reliable versatility in everyday surgery.

Simple and versatile application - suitable for your technique

Our adhesive materials, **Cem DC** and **E-Cem DC**, provide maximum flexibility in application. Whether you prefer the full-adhesive approach with total-etch or self-etch techniques, or the self-adhesive approach, these materials adapt seamlessly to your individual working methods.

The infographic guides you step-by-step on the best techniques and bonding options for using Cem DC and E-Cem DC. Benefit from structured workflows and reliable results for your daily practice..



Cementime DC®

Cementime DC is an innovative, dual-curing and eugenol-free semi-permanent luting cement, specially developed for the cementation of crowns and bridges on implants and for long-term temporary restorations. Thanks to the practical mini syringe, Cementime DC can be applied directly - clean and efficient working without additional mixing with a spatula.

INDICATIONS:

- Cementing of crowns and bridges on implants
- Long-term temporary restoration

ADVANTAGES:

- ✓ **Excellent adhesion and sealing:** Cementime DC is based on methacrylates and offers excellent adhesive properties. In contrast to composite-based cements, there is no shrinkage, but rather a controlled, minimal expansion, which enables a bacteria-proof seal and optimum adhesion to the superstructures.
- ✓ **Gentle on the implant:** Thanks to its high elasticity, Cementime DC relieves the implant and reduces pressure on the bone. This flexible mobility ensures gentle loading and minimizes the risk of stress damage.

- ✓ **Antibacterial protection with zinc:** With its zinc content, Cementime DC actively supports protection against bacterial contamination - an important property for the long-term stability and health of the implants.
- ✓ **Easy removal and follow-up:** Cementime DC can be removed easily and without leaving any residue, which means that follow-up checks and possible adjustments to the superstructures can be carried out easily without damaging them.
- ✓ **Precise and efficient application:** Direct application from the mini-syringe allows for precise dosing and an extremely thin layer thickness for maximum accuracy of fit. Excess material can be easily and cleanly removed during placement.
- ✓ **Universal material compatibility:** Cementime DC is compatible with all common material combinations and provides a flexible and reliable solution for a wide range of clinical needs.



SEMI
PERMANENT

DELIVERY FORM

**Cementime DC,
5 ml Mini syringe 4:1**
(incl. 10 Mixing tips brown,
pointed 4:1)
Art.-No.: 03730

„Full- adhesive approach“



Bisico® Cem DC

Bisico® Cem DC is a dual-curing, low viscosity, composite-based luting cement for the permanent cementation of all types of restorations in the anterior and posterior regions. It is highly radiopaque and has an impressive shade stability.

INDICATIONS:

- For cementation of crowns, bridges, inlays, onlays and veneers. Cem DC is ideal for restorative materials such as metal, zirconium oxide and all types of veneering ceramics (e.g. feldspar, alumina and lithium disilicate ceramics).

ADVANTAGES:

- ✓ **High flexural and tensile strength values:** Very strong attachment of the restoration to the tooth.
- ✓ **High filler content (61% weight, 41% volume):**
High resistance to mechanical forces.
- ✓ **Reliable cement gap sealing and high adhesion to tooth and restorative material:**
Low risk of secondary caries.
- ✓ **Minimal solubility towards acids:** Almost complete resistance to oral acids. This not only reduces the risk of secondary caries, but also contributes to the long-term durability of the restoration.
- ✓ **Optimized flow and low film thickness:** Comfortable handling and perfect fit of the restoration on the prepared tooth surfaces.

DELIVERY FORM

Shade, A2, 5 ml syringe
(incl. 10 Mixing tips brown, pointed 1:1)
Art.-No.: 75241

Shade A3, 5 ml syringe
(incl. 10 Mixing tips brown, pointed 1:1)
Art.-No.: 75240

Shade white opaque, 5 ml syringe
(incl. 10 Mixing tips brown, pointed 1:1)
Art.-No.: 75242

Shade translucent, 5 ml syringe
(incl. 10 Mixing tips brown, pointed 1:1)
Art.-No.: 75243

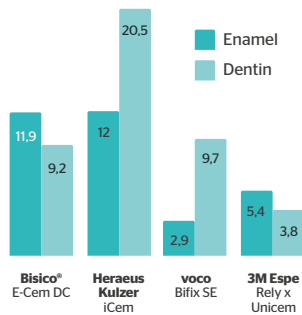
Self-adhesive approach

PERMANENT

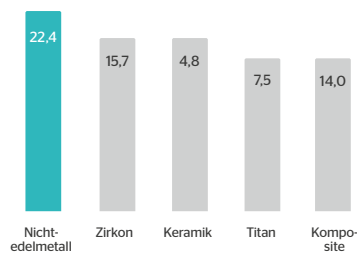


DELIVERY FORM

5 ml syringe 4:1
(incl. 15 Mixing tips brown 4:1)
Art.-No.: 75340



Shear adhesion values on enamel & Dentin (MPa)



Shear adhesion values on different restorative materials (MPa)

E-Cem DC

E-Cem DC is a modern, dual-curing, self-etching universal cement for the permanent cementation of all-ceramic and metal restorations as well as composite restorations and root canal posts.

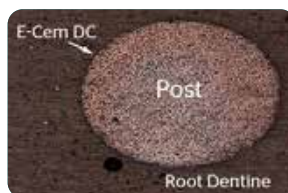
INDICATIONS:

Permanent luting of:

- crowns and bridges made of metal and metal ceramic
- crowns and bridges of reinforced ceramics (e.g. Zirconia)
- all-ceramic crowns and bridges produced by using Cerec®
- inlays and onlays of ceramic, metal and composite
- Posts
- metal, metal ceramic and reinforced ceramics (e.g. Zirconia) on implant abutments

ADVANTAGES:

- ✓ **Excellent aesthetics:** Thanks to its natural shade and tooth-like fluorescence, E-Cem DC perfectly matches the natural appearance of the tooth. Especially with translucent ceramics, esthetically demanding, lifelike results can be achieved with no visible transitions between the tooth and the restoration. Later discoloration is eliminated, ensuring the long-term aesthetics of the restoration.
- ✓ **Quick and easy to use:** E-Cem DC does not require etching, priming or bonding. This saves valuable time and reduces stress on the tooth. With a comfortable, gel-like consistency, the cement can be applied precisely in a thin layer and excess can be easily removed.
- ✓ **Long-term durability:** Excellent bond strength and optimized volume behavior ensure long-lasting and reliable cementation. Low initial shrinkage and subsequent slight expansion prevent fracture and capillary splitting, ensuring long-term stability of the restoration.
- ✓ **Protection from postoperative discomfort:** E-Cem DC quickly neutralizes the pH value, which prevents post-operative sensitivity. The use of this cement protects the tooth from pain and thus contributes to a more comfortable treatment.
- ✓ **Excellent edge sealing:** E-Cem DC ensures a perfect and long-term marginal seal that protects against cement washout at the crown margin and thus reduces the risk of secondary caries. This protection is particularly important to extend the lifetime of the restoration.
- ✓ **Durability and resilience:** The high release of fluoride ions additionally strengthens the tooth and protects it from harmful acids such as lactic acid. This helps to prevent secondary caries and promotes the long-term health of the tooth structure.
- ✓ **Easy application and time saving:** E-Cem DC is available in practical 5 ml Minimix syringes, which enable error-free, bubble-free mixing and easy application. Mixing is quick and easy with the mixing tip - without the risk of air bubbles.
- ✓ **Dual-curing for extra safety:** E-Cem DC cures chemically and light-curing. After the initial light-curing (5 seconds), the restoration remains firmly and securely in place, ensuring precise and reliable cementation.



Excellent marginal seal between E-Cem DC and post/dentin

**DELIVERY FORM**

Glass Cem hand mix,
35 g powder, 20 ml liquid
 Art.-No.: 75060

Bisico® Glass Cem

Bisico® Glass Cem is a special glass- ionomer luting cement for cementing crowns, bridges, inlays and onlays (metal, ceramic and zirconia) and as underfilling under composites.

Bisico® Glass Cem is not sensitive to moisture during storage, even in warm and humid climates. Therefore it has an excellent durability. It is resin-free and is characterized by a very good biocompatibility. Bisico® Glass Cem has an enhanced transparency because some of the components that are responsible for the coloration are dissolved in the liquid.

ADVANTAGES:

- ☑ No sensitivity to moisture during storage → Long durability
- ☑ Excellent handling features → Stable setting time
- ☑ Excellent bonding to dentine and enamel → Excellent marginal fit and seal
- ☑ High fluoride release → Tooth protection
- ☑ High biocompatibility → No allergic reactions
- ☑ Easy, fast removal of excess material

Bisico® Glass Fill

Bisico® Glass Fill is developed special glass- ionomer restorative cement.

Bisico® Glass Fill is a newly developed glass ionomer restorative cement, designed for superior performance even in warm and humid climates. Its resin-free composition ensures excellent biocompatibility, making it ideal for patients with allergies or sensitivities.

INDICATIONS:

- Class I and II restorations in primary teeth
- Small class I and II restorations in permanent teeth
- Temporary restorations in load-bearing situations in class I and II cavities
- Base material for class I and II cavities in the sandwich technique
- Class V and root surface restorations

ADVANTAGES:

- ☑ No sensitivity to moisture during application and storage → Stable setting time, long durability
- ☑ Suitable translucency → Esthetic results
- ☑ High fluoride release → Tooth protection
- ☑ High biocompatibility → No allergic reactions

**DELIVERY FORM**

Glass Fill hand mx,
15g powder, 10ml liquid
 Art.-No.: 75090

ACCESSORIES

Mixing Tips

for cements

**DELIVERY FORM**

Mixing tips brown, pointed 1:1,
50 pieces
 Art.-No.: 03470

Mixing tips brown 4:1,
50 pieces
 Art.-No.: 03480

Temporary materials

Aesthetic temporary restorations
- bubble-free and easily fabricated..





DELIVERY FORM

Shade A1, 50 ml, 4:1

(incl. 15 Mixing tips light blue 4:1)
Art.-No.: 73560

Shade A2, 50 ml, 4:1

(incl. 15 Mixing tips light blue 4:1)
Art.-Nr.: 73540

Shade A3, 50 ml, 4:1

(incl. 15 Mixing tips light blue 4:1)
Art.-No.: 73570

Shade Bleach, 50 ml, 4:1

(incl. 15 Mixing tips light blue 4:1)
Art.-No.: 73590

Shade A3, 5 ml, 4:1

(incl. 5 Mixing tips brown)
Art.-No.: 73571

Shade A2, 5 ml, 4:1

(incl. 5 Mixing tips brown 4:1)
Art.-No.: 73541

Provi Temp K

Provi Temp K is a self-curing, paste-like composite material for the fabrication of temporary crowns and bridges based on multifunctional methacrylates in the mixing ratio 4:1.

Due to its high final hardness and high elasticity, Provi Temp K is particularly suitable for the fabrication of large bridges. The material shows a natural fluorescence under UV light, which further enhances its aesthetic effect.

INDICATIONS:

- Fabrication of temporary crowns, bridges, inlays, onlays and veneers
- Fabrication of long-term temporary restorations

ADVANTAGES:

- ✓ **High resistance to breakage and abrasion:** Provi Temp K offers exceptional flexural and abrasion resistance, which significantly extends the durability of the temporary and makes it resistant to daily chewing pressure.
- ✓ **Low curing temperature:** The temporary restoration can be fabricated extraorally or intraorally, as the low heat development (below 40°C) does not stress the patient.
- ✓ **Methyl methacrylate-free:** Provi Temp K is free of methyl methacrylate, making it biocompatible and tissue friendly.
- ✓ **Excellent accuracy of fit and low shrinkage:** Due to the minimal polymerization shrinkage and high dimensional stability, the temporary remains precisely adapted, optimally protects the prepared teeth and secures the occlusion.
- ✓ **Easy to polish and repair:** The cured temporary can be optimally polished and easily repaired if necessary. Already cured material chemically bonds with new Provi Temp K or light-curing composites.
- ✓ **Outstanding aesthetics:** Provi Temp K offers excellent color and shape stability, so that the temporary restoration retains an aesthetically pleasing appearance even over longer periods of time.
- ✓ **High stability:** The exceptional stability of the material is particularly evident on thin crown margins, making it ideal for the fabrication of large and extended bridge structures.

TECHNICAL DATA

Shades: A1, A2, A3, Bleach

Mixing time: Not applicable

Processing time: 1 Min.

Curing time in the mouth: approx. 3 Min.

Curing time until finishing: approx. 6 - 7 Min.



Fabrication of temporary restoration with Bisico Provi Temp K

Provi Bond K

Eugenol-free, temporary luting cement.

Provi Bond K is a high-quality, eugenol-free, temporary luting cement for the safe and simple cementation of temporary and permanent crowns and bridges. The practical application directly from the cartridge or mini syringe ensures error-free, optimum dosing and saves valuable time in everyday practice.



DELIVERY FORM

5 ml Mini syringe 1:1

(incl. 10 Mixing tips brown 1:1)

Art.-No.: 03710

25 ml Cartridge 1:1

(incl. 12 Mixing tips light blue 1:1)

Art.-No.: 03720

INDICATIONS:

- Temporary luting of provisional crowns and bridges
- Temporary luting of permanent crowns and bridges

ADVANTAGES:

☑ Eugenol-free

Provi Bond K is eugenol-free and therefore does not affect the subsequent use of composite systems, which guarantees maximum flexibility during treatment.

☑ Secure, reliable adhesion

Provi Bond K provides a reliable bond and optimal protection of the tooth stump against external stimuli (cold, heat, acid). The smooth contact surface between the dentin and the crown enables easy removal of the temporary without damaging the tooth stump.

☑ No cement residue on the tooth stump

Provi Bond K remains exclusively in the temporary so that the tooth stump remains clean when the temporary is removed. Excess material can be easily removed, which ensures clean, easy handling.

☑ Antibacterial effect

The zinc oxide content protects the tooth stump from bacterial contamination.

Temp S

Temporary crown and bridge material.

Bisico® Temp S is an acrylate-based material which has proven itself over decades for the fabrication of temporary crowns and bridges. The powder and liquid are mixed by hand. Then Temp S can be applied intraorally or extraorally.

The material is resistant to fracture and abrasion and is easy to finish, polish and repair.



DELIVERY FORM

**100 g powder universal,
50 ml liquid, 1 mixing cup**

Art.-No.: 03120

100 g powder universal

Art.-No.: 12510

50 ml Temp S liquid

Art.-No.: 12520

ZUBEHÖR



Dispenser 4/10

For 50ml cartridges 4:1
(Provi-Temp K)

Art.-No.: 02020



Dispenser 25

For 25ml cartridges 1:1
(Provi Bond 25ml)

Art.-No.: 01940



Mixing tips for Provi Temp K

DELIVERY FORM

**Mixing tips light blue 4 : 1,
50 pieces**

(orange spiral)
Art.-No.: 03460

**Mixing tips brown 4 : 1,
50 pieces**

(orange spiral)
Art.-No.: 03480



Mixing tips for Provi Bond K

DELIVERY FORM

**Mixing tips light blue 1 : 1,
50 pieces**

(pointed, white spiral)
Art.-No.: 03450

**Mixing tips brown 1 : 1,
50 pieces**

(pointed, white spiral)
Art.-No.: 03470



Bielefelder Dentsilicone GmbH & Co. KG

Johanneswerkstraße 3

33611 Bielefeld

Tel. +49 (0) 521 801 68 00

Fax +49 (0) 521 801 68 01

E-Mail info@bisico.de

Web www.bisico.de

Rev. Nr.: 68400-04.2025



@bisico_gmbh